



ANATOMIE®



DESIGNED TO FLY

THE ANATOMIE STORY As passionate adventurers ourselves, we believe that traveling freely is one of the greatest luxuries in life. So we set out to create the best travel brand on the globe. Our apparel is strong, light, flexible, multi-functional and nearly indestructible. Designed in fine European fabrics and stylish enough for work and play, Anatomie can take you from a flight to a hike to a meeting to a dinner— all in one comfortable, sleek and sustainable outfit.

We hope to create design solutions that are meaningful to people, relevant to our society and sensitive to our planet.



- Shawn Boyer, Creative Director & Kate Boyer, CEO



A-B

A. Kaddy Blazer \$275

Sleeve cut-outs, button closure, faux pocket. **AA1711**

B. Faith Pant \$245

Contrast panels, slim fit, front zip pockets, faux back pockets. **AA1409**

Both in White. XS-XL.

Cotton/Tencel/spandex.

Machine wash cold. Imported.

Named one of the top ten most disruptive brands of 2020 by the Interactive Advertising Bureau.



BRING FLOWERS



A-B



C



D-E

- A. Xael Raincoat \$198**
Contrast piping, drawstring hood, front pockets, snap front. Clear. Polyurethane. Wipe clean. AA1712
 - B-C. Italian Techno Floral**
Polyamide/elastane. Machine wash cold. Made in Italy.
 - B. Svana Jacket \$268** Printed power mesh. Back and shoulder panel detail, front pockets, zip front. AA1210
Pant, see page 10.
 - C. Marine Wrap Dress \$228**
Soft Italian super-stretch jersey, v-neck wrap front, three-quarter sleeves AA1602
 - D. Frida Stretch Denim Jacket \$358** Stand collar, snap front, snap chest pockets, side slit pockets. Navy. Cotton/polyester/elastane. AA0717
 - E. Jackson Short Sleeve Top \$148**
Power mesh insets on V-neck and sleeves. Yellow. Polyester/elastane. Made in Italy. AA1204
Pant, see page 16.
- All XS-XL. Machine wash cold unless noted otherwise. Imported.



EASY CARE

Italian super jersey is the ultimate luxury fabric for women on the go—no iron, no dry cleaner, just perfection the minute you put it on.



A. Aarhi Vest \$228
 Lightweight and reversible. Zip front, side pockets. Silver. Also in Blue Paisley and Painted Camo. Nylon. AA1702

B. Isla Long Sleeve Top \$168
 V-neck, power mesh sleeves, rounded hem. White. Also in Black. Polyester/elastane. Made in Italy. AA1203

C. Demi Jean \$208
 Stretch denim. Five pocket design. Slim fit, mid rise, skinny leg. Cotton/polyester/elastane. AB0414

D. Summer Danica Shirt \$248
 Soft Italian super-stretch jersey, snap front. Techno Floral. Also in Blue Paisley and Light Blue. Polyester/elastane. Made in Italy. AB0201-1

E. Luisa Suva Jean \$225
 Five pocket design. Slim fit, mid rise, skinny leg. Chartreuse. Polyamide/elastane. AS6466SU
 All XS-XL. Machine wash cold. Imported.

A-C

Power Mesh is feminine, not fragile, with athletic-grade durability so it won't snag on jewelry

GETAWAY READY



D-E

Easy to wear, easy to care for. Never stop exploring with performance apparel designed with the technical details that keep you on track and in style.

ARRIVE IN STYLE



A-B



C-D

- A. Calypso Shirt \$158**
Neck detail, button front, rounded hem. White. Poplin/pima cotton jersey. AA1226
- B. Skyler Suva Pant \$225**
Slim fit, mid rise, straight leg. Vitamin A. Polyamide/elastane. Made in Italy. AS406SU
- C. Vice Versa Shirt Jacket \$228**
Hidden button-front closure. Self tie belt. Black. Also in White. Cotton poplin. Made in Italy. AA1216
- D. Faith Pant \$245**
Contrast panels, slim fit, front zip pockets, faux back pockets. White. Cotton/Tencel/spandex. AA1409
All XS-XL. Machine wash cold. Imported.

Feel put-together in seconds with timeless styles that can be dressed up or down

A. Loretta Perforated Leather Jacket \$298 Zip front, hidden zip pockets. Stretch fleece panels. Black. With polyamide/elastane. Professional leather clean. **AA7082**

B. Buddah Mesh Long Sleeve Top \$158 Stretch power mesh sleeves and yoke. Black. Also in White and Navy. Cotton/elastane. **AA9211**

C. Cozy Skyler Pant \$198 Slim fit, mid rise, straight leg. Black. Brushed Lycra spandex/polyamide/elastane. Made in Italy. **AS406CE**

D. Emi Tank Top \$158 Double layers. Black. Pima cotton jersey. **AA1223**

E. Stormi Jacket \$298 Zip front with snaps, drawstring waist. Black. Polyamide/elastane. **AA1704**

F. IPant \$254 Zip front, slim fit, skinny leg, ankle length hem with zippers, side pockets. Black. Also in Navy. Polyamide/elastane. **AA1405**

All XS-XL. Machine wash cold unless noted otherwise. Imported.



D-F



D



A-C



A



E

THE ANATOMIE ADVANTAGE

A mix of textures makes monochrome dressing more interesting. Every piece is easy and interchangeable so your life is simplified, no matter your destination.



The perfect layering piece: A leather jacket that looks custom-made on every body thanks to a tailored fit and stretch fleece panels

DESIGNED TO FLY,
BUILT TO LAST

Join our tribe of women who live life
adventurously wherever they go.
Follow us on social media and get
inspired to explore.

@ANATOMIESTYLE
#EVERYDAYANATOMIE



A-C

A. Stormi Jacket \$298
A mix of matte and shine. Zip front
with snaps, drawstring waist. Khaki.
Polyamide/elastane. AA1704

B. Alida Shirt \$168 Button front,
French cuffs. Jersey sleeves and
back. White. Cotton. AA1219

C. Luisa Pant \$225 Five pocket
design. Slim fit, mid rise, skinny leg.
Khaki. Polyamide/elastane. AS6466
All XS-XL. Machine wash cold.
Imported.

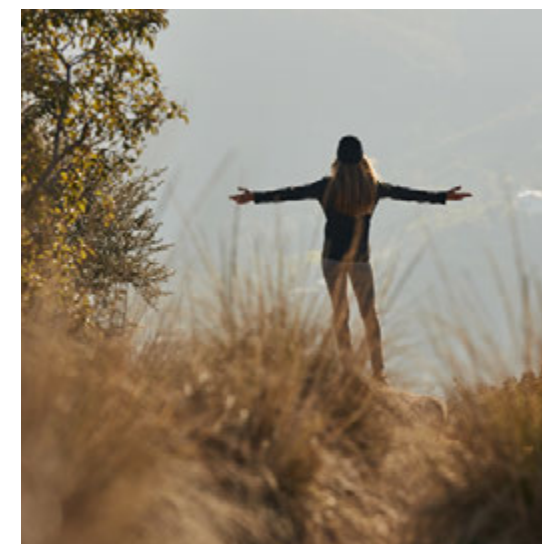
DISCOVER THE WORLD OF ANATOMIE



Scan
to learn
more



ESCAPE ARTISTS Join us and gain access to the
most amazing travel advisors in the world. The Escape Artists
are our highly curated, hand-selected group of experts with the
knowledge and expertise to create unforgettable trips designed
just for you.



Scan
to learn
more



SIGNATURE TRAVEL NETWORK We are
thrilled to partner with a travel network that puts the extra in
extraordinary. Signature customers receive complimentary
Anatomie concierge services and special discounts to help
them fly in comfort and style.



Scan
to learn
more



JOIN OUR VIP CLUB You deserve all the love & more for
putting your trust in us—which is why you can earn points just for
being a fan of Anatomie, and even more points for being a loyal
customer. Scan to visit our VIP Club page and learn more.



Scan
to learn
more



PERSONAL STYLING Ready to assist you 24/7 with a
wealth of fit and fashion expertise, our personal stylists pamper you
with one-on-one appointments, virtually or in-person at our Miami
headquarters. Call our Fit and Style Hotline at 1-833-576-1900.

ACTIVE ESSENTIALS

The Kenya Jacket takes you around the world



A-C

A. Kenya Jacket \$378

High neck with double snap closure, zip front. Two patch pockets, two zip pockets. Slim fit. Grey. Also in Black, Navy, Khaki and White. Polyamide/elastane. **AS6308**

B. Delaney Vest \$268 High neck with double snap closure, two-way zip front. Two zip pockets. Slim fit. Shown in Grey and Navy. Also in Black, Khaki and White. Nylon. **AA5702**

C. Beth Top \$228 V-neck with pointed collar, stretch power mesh sleeves, button front. White. Also in Black. Polyamide/elastane. **AS7258**

Pant, see page 17.

D. Flo Top \$168 Back V-neck, stretch power mesh detail. White. Also in Black and Navy. Cotton/modal/polyester/elastane. **AS7257**

E. Kate Suva Cargo Pant \$225 Slim fit, mid rise, skinny leg. Atomic Red. Polyamide/elastane. **AA411SU**

F. Travel City Slick Jacket \$348 Wind resistant and fleece lined. Zip pockets, slim fit. White. Also in Black. Polyester/elastane. **AS711**

G. Kim Top \$178 Stretch power mesh sleeves, back V-neck with mesh. White. Also in Black and Navy. Viscose/polyester/elastane. **AS6212**
All XS-XL. Machine wash cold. Imported.



Scan to see the Kenya Jacket all over the world



D-E

Made in our signature French stretch woven, this collection of tried-and-true essentials is designed with both fashion and function in mind. Always best-sellers, always in stock, they're year-round pieces that work just as well in the city as they do in the great outdoors. Mix and match with abandon.



F-G



B

SLIM FIT

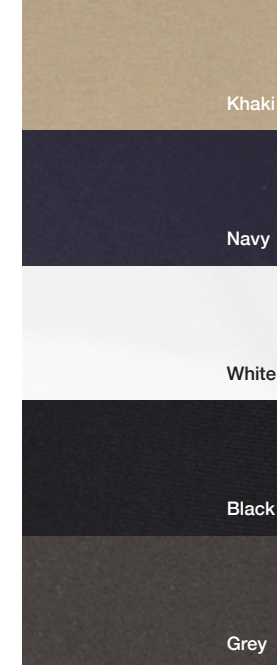


Crafted in a state of the art performance stretch woven from France and tailored to meet the needs of the modern woman. So good, they come with a **LIFETIME GUARANTEE**.



**PANTS THAT LAST A LIFETIME...
WE GUARANTEE IT**

Anatomie is proud to introduce the only must-have performance pant with a **LIFETIME GUARANTEE**.



KATE



- Mid Rise
- Slim Leg
- Crop Length

A. Kate Cargo Pant
\$225 AA411

SKYLER



- High Rise
- 5-Pocket
- Full Length

B. Skyler High Rise Pant
\$225 AS406

LUISA



- Mid Rise
- 5-Pocket
- Sits on hips

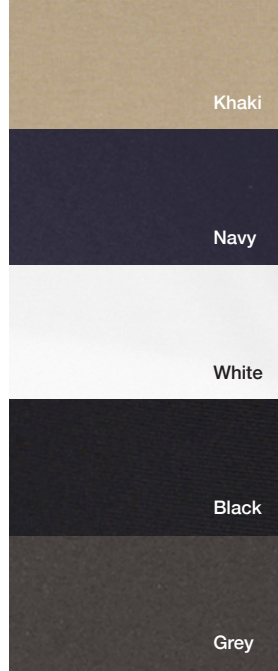
C. Luisa Pant \$225
AS6466

SUSAN



- Mid Rise
- Back Zippers
- 4-Pocket

D. Susan Pant \$225
AS409



Khaki

Navy

White

Black

Grey

FIND YOUR PERFECT FIT...

Our styling experts are highly knowledgeable about our pant fits and ready to help you find your perfect pant.

Visit Anatomie.com or call our Fit and Style Hotline at 1-833-576-1900 to book your virtual styling and fit appointment today.



Scan to find your fit and learn more

CURVY FIT



Anatomie loves curves and we're experts at fits that cater to your body. So confident and durable, we offer a **LIFETIME GUARANTEE.**

PEGGY



- Cropped
- Straight Leg
- High Rise

A. Peggy Pant \$225
AS8412

MARISA



- Side Zip
- High Rise
- Slim Leg

B. Marisa Pant \$225
AS6402

SONIA



- Side Zip
- Extra-wide High Rise
- Straight Leg

C. Sonia Pant \$225
AS6465

THEA



- Cropped Leg
- Hidden Front Zipper
- High Rise

D. Thea Pant \$225
AS8403

PERFORMANCE PULL-ON PANTS

A. Buddah Mesh Long Sleeve Top \$158 Stretch power mesh sleeves and yoke. Navy. Also in White and Black. Cotton/polyester/elastane. **AS209**

B. Andrea Pant \$225 Skinny fit, mid rise, skinny leg. Side zip detail. Navy. Also in Black and Grey. Polyamide/elastane. **AS445**

C. Kim Top \$178 Stretch power mesh sleeves, back V-neck with mesh. Red. Also in White, Black and Navy. Viscose/polyester/elastane. **AS6212**

D. Melissa Short Sleeve Top \$158 Stretch power mesh sleeves and shoulder panels. White. Also in Black and Navy. Pima cotton/modal/spandex. **AS7620**

E. Allie Pant \$225 Slim fit, high rise, skinny leg. Side zip pockets. Black. Also in Navy. Polyamide/elastane. **AS445**

All XS-XL. Machine wash cold. Imported.



A-B

- Hidden Waist pocket
- Ankle Zippers
- Cargo Pockets



FREE GIFT!



Feel put-together with ultimate comfort.

The secret to our pull-on pants is the extra-wide waistband and perfect fit



C



D-E

- Tight Pull on
- Lycra Lined
- Extra Wide Waist

ALLIE

FREE MINI PACKING CUBE Buy any 2 Anatomie pieces and get a complimentary Mini Packing Cube. Sustainably made from repurposed fabric, it fits three essential tops or two pairs of pants for a total weight of only one pound.

SHIRT STORIES



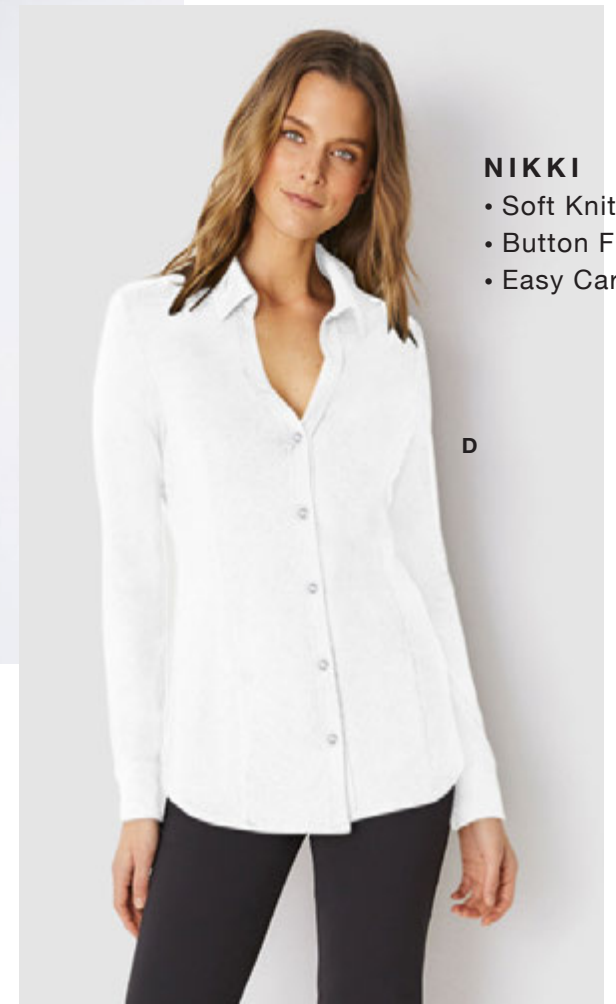
CALYPSO
 • Knit Back
 • Easy Boxy Fit



BETH
 • Best Seller
 • Sheer Sleeves
 • Versatile



DANICA
 • Italian Super Jersey
 • Snap Front
 • Lightweight



NIKKI
 • Soft Knit
 • Button Front
 • Easy Care

A. Calypso Shirt \$158 Neck detail, button front, rounded hem. White. Cotton poplin front, cotton/Lycra spandex jersey back. **AA1226**

B. Beth Top \$228 V-neck with pointed collar, mesh sleeves, button front, rounded hem. White. Also in Black. Polyamide/elastane. **AS7258**

C. Danica Shirt \$248 White. Also in Black. Polyester/elastane. **AB0201**

D. Nikki Shirt \$178 Point collar. White. Also in Black and Navy. Polyester/elastane. **AA0219**
 All XS-XL. Machine wash cold. Imported.



ANATOMIE®

6701 NE 4th Avenue
Miami, FL 33138

THE JOURNEY BEGINS

A. Dakota Cardigan \$118 Open front, three-quarter sleeves, pockets. **AA0716**

B. Scoopneck River Tank \$85 AA0214

C. Harlow Pant \$118 Relaxed fit, mid rise, wide leg. **AA0411**

All shown in Oatmeal. Also in Black or Heather Grey.
XS-XL. Viscose/spandex.

Machine wash cold. Imported.



A-C



MIX
Paper from
responsible sources
FSC® C102490